



**THE LOCATION: ALSTOM BALLARAT MANUFACTURING FACILITY**



JASON RYAN (MIDDY'S BALLARAT SALES REP) AND COLIN MADIGAN (ALSTOM)

# LED Lighting Changeover

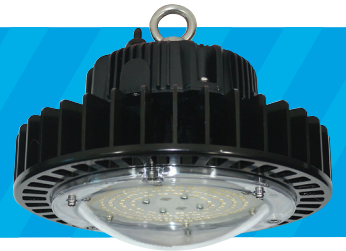
Middy's Ballarat Sales Rep, Jason Ryan and TechEnergy Rep, Leigh Stacey approached Alstom Transport at their manufacturing facility in Ballarat to discuss the benefits of an LED Lighting changeover and offer a quote and ROI on their existing 290 x 400W Mercury Vapour Highbays.

Alstom jumped onboard and the changeover resulted in a 63.7% reduction in energy consumption and a return on investment of 0.2 years. Omega GHB150 LED Highbays were chosen to deliver high quality light output with substantial operating and maintenance cost savings. Another major benefit for Alstom was a reduction in carbon emissions and the vastly increased life span of the new fittings.

- ▶ On-site installation of 290 x 150W LED Highbays
- ▶ 63.7% reduction in energy consumption
- ▶ Increased LUX levels within the factory

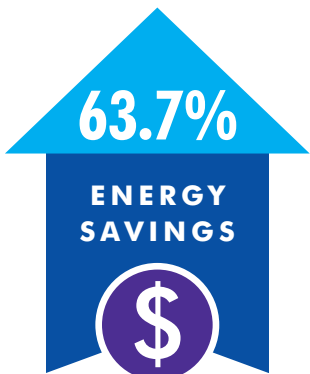
## THE INSTALL:

**290 x 150W LED HIGHBAYS**



The opportunity to reduce our energy waste and consumption along with improving the level of lighting within our operation was too good to resist. The project was well communicated, documented, explained and carried out professionally. I would recommend anybody who is thinking of utilising the government rebate and who wants to improve their energy environmental footprint to work with Middy's in supplying a solution that fits your business needs.

Mathieu Chevalier Site Director Ballarat



REDUCED  
CARBON  
EMISSIONS



REDUCED  
MAINTENANCE  
COSTS



Download and print this Case Study at: [middys.com.au/products/product-case-studies](http://middys.com.au/products/product-case-studies) or [middystechenergy.com.au/case-studies](http://middystechenergy.com.au/case-studies)